

MMF-302 Interface Module

One FireLite Place
Northford, CT 06472
Phone: 203.484.7161

SPECIFICATIONS

Normal Operating Voltage:	15 to 32 VDC
Maximum Current Draw:	5.1mA (LED on)
Average Operating Current:	270µA (LED flashing)
EOL Resistance:	3.9K ohms
Maximum IDC Resistance:	25 Ohms
IDC Supply Voltage (between Terminals T10 and T11)	
Regulated DC Voltage:	24 VDC power limited
Ripple Voltage:	0.1 Volts RMS maximum
Current:	90mA per module
Temperature Range:	32°F to 120°F (0°C to 49°C)
Humidity:	10% to 93% Non-condensing
Dimensions:	4½" H × 4" W × 1¼" D (Mounts to a 4" square by 2⅝" deep box.)
Accessories:	SMB500 Electrical Box

BEFORE INSTALLING

This information is included as a quick reference installation guide. Refer to the control panel installation manual for detailed system information. If the modules will be installed in an existing operational system, inform the operator and local authority that the system will be temporarily out of service. Disconnect power to the control panel before installing the modules.

NOTICE: This manual should be left with the owner/user of this equipment.

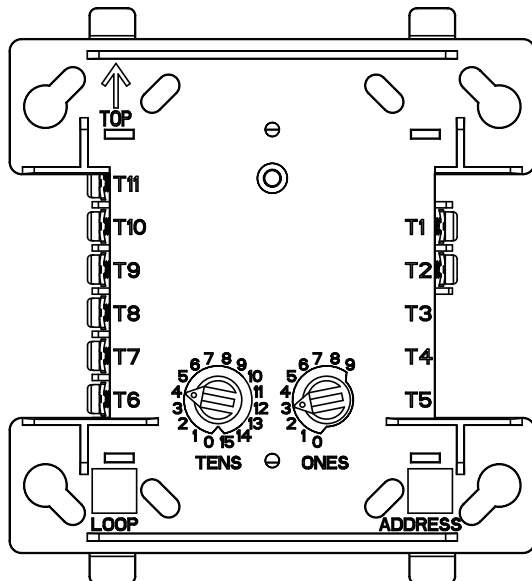
GENERAL DESCRIPTION

The MMF-302 Interface Module is intended for use in addressable two-wire systems, where the individual address of each module is selected using the built-in rotary switches. This module allows addressable panels to interface and monitor two-wire conventional smoke detectors. It transmits the status (normal, open, or alarm) of one full zone of conventional detectors back to the control panel. All two-wire detectors being monitored must be UL compatible with this module. The MMF-302 has a panel controlled LED indicator and can be used to replace an M302 module in existing systems.

COMPATIBILITY REQUIREMENTS

To ensure proper operation, these modules shall be connected to listed compatible system control panels only. In addition, please refer to Fire-Lite Device Compatibility document number 15384 for the list of compatible detectors.

FIGURE 1. CONTROLS AND INDICATORS:



C1059-00

MOUNTING

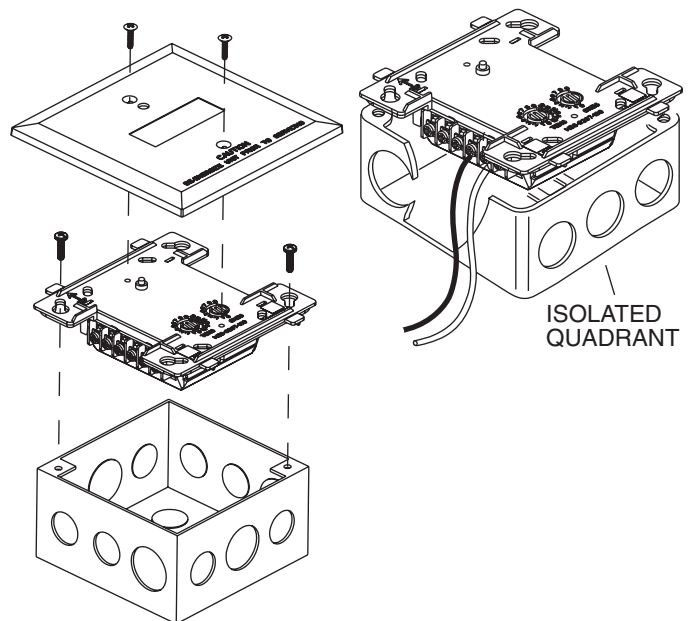
The MMF-302 mounts directly to 4-inch square electrical boxes (see Figure 2). The box must have a minimum depth of 2⅝ inches. Surface mounted electrical boxes (SMB500) are available.

WIRING

NOTE: All wiring must conform to applicable local codes, ordinances, and regulations. This module is intended for power-limited wiring only.

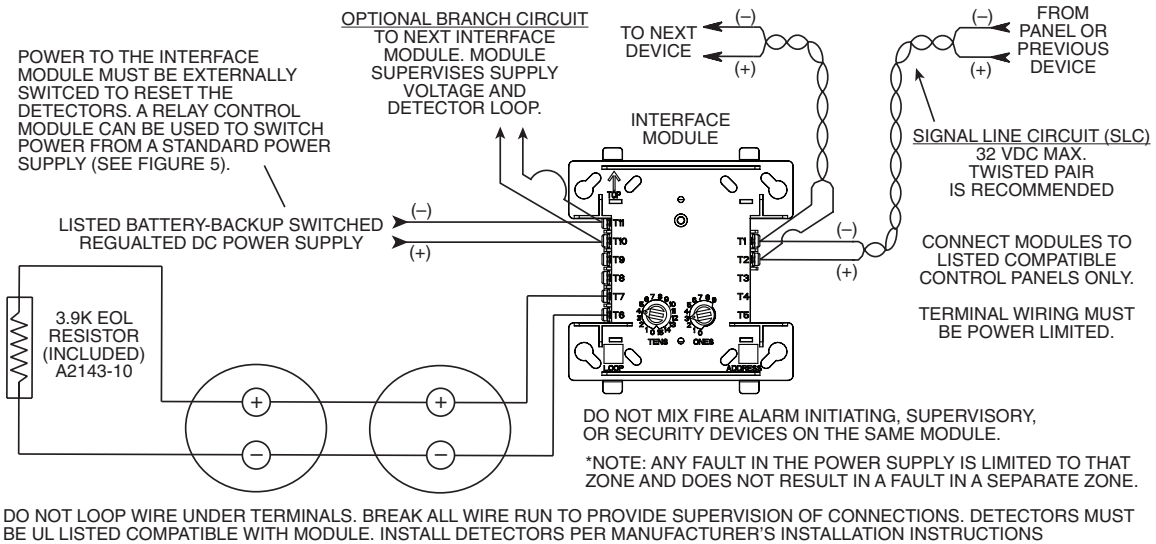
1. Install module wiring in accordance with the job drawings and appropriate wiring diagrams.
2. Set the address on the module per job drawings.
3. Secure module to electrical box (supplied by installer), as shown in Figure 2.

FIGURE 2. MODULE MOUNTING:



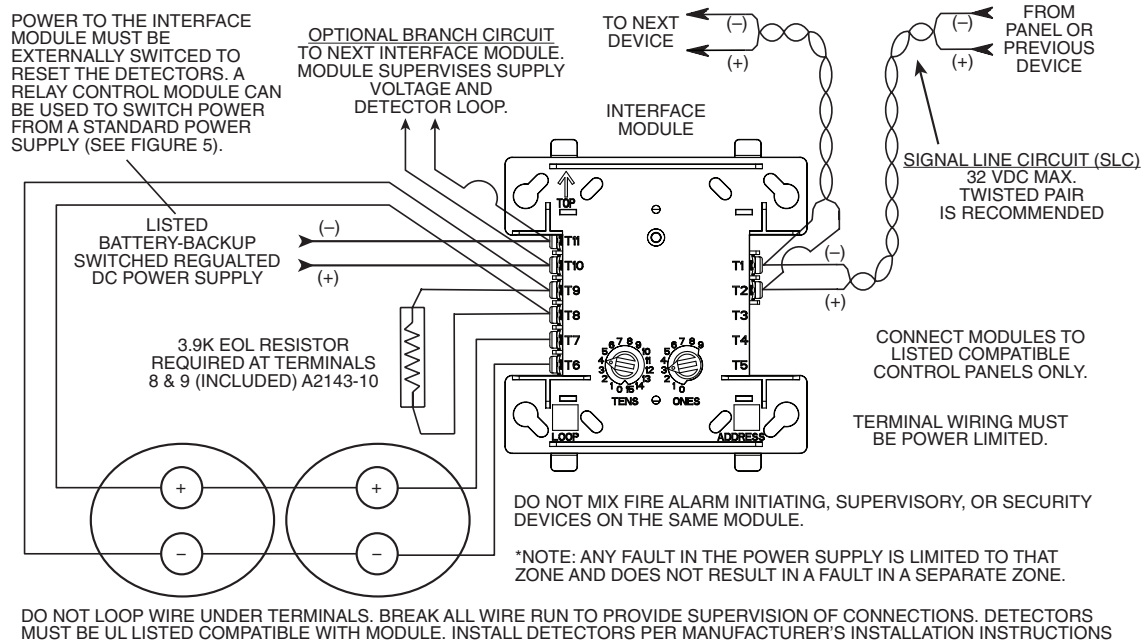
C1066-00

FIGURE 3. INTERFACE TWO-WIRE CONVENTIONAL DETECTORS, NFPA STYLE B (CLASS B):



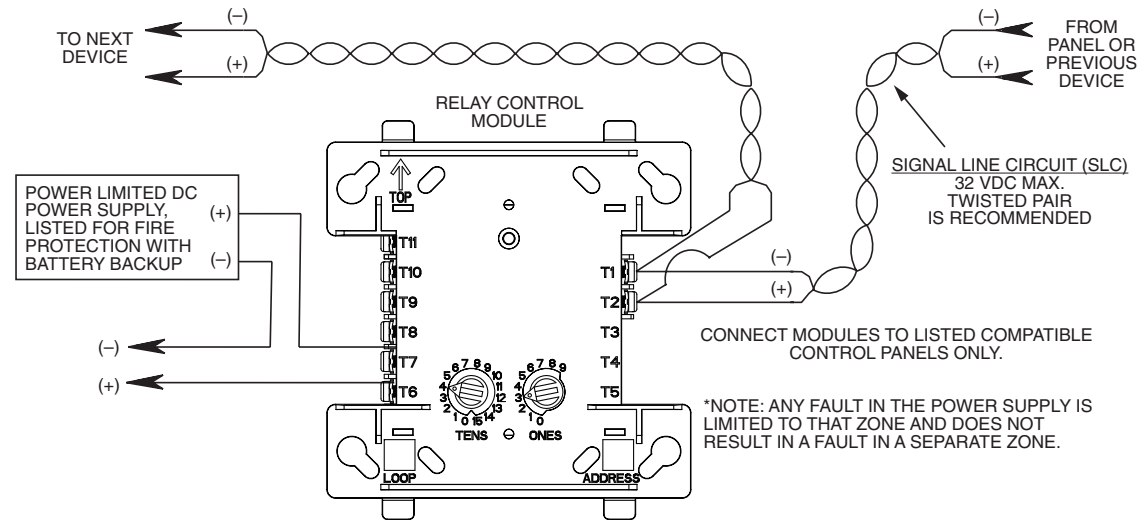
C1061-00

FIGURE 4. INTERFACE TWO-WIRE CONVENTIONAL DETECTORS, NFPA STYLE D (CLASS A):



C1062-00

FIGURE 5. RELAY CONTROL MODULE USED TO DISCONNECT A POWER SUPPLY:



C0945-00