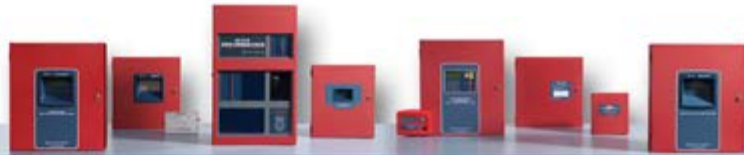


 **FIRE-LITE ALARMS**
by Honeywell

www.firelite.com





[Fire-Lite Alarms is here for your business](#)

[NOW more than ever!](#)

Fire-Lite Alarms' Tech Support line is now open an additional 2 hours!

We are pleased to announce the Technical Support department for Fire-Lite Alarms is now open 8:00a.m. - 7:00p.m. EST Monday through Friday. The additional two hours per day makes our NICET certified Fire professionals even MORE accessible to answer your questions.

Our Connecticut-based Technical Support team can be reached toll-free at **800-627-3473**  (for the USA & PR) or **1-203-484-7161**  (for all other locations).

Para nuestros Clientes hispanohablantes: Disponemos de Técnicos que hablan Español. Solicite hablar con uno de ellos si ello le resulta más conveniente.

The Fire-Lite Alarms Tech Support Line offers installers several important benefits in addition to MORE hours:

- Timely response to fire panel programming questions, wiring issues and system troubleshooting.
- Fast escalation of the most difficult questions through direct connection to Product Management and Engineering
- Same day technical solution for email solutions via the web. (firelite.tech@honeywell.com)
- 24/7 availability of our website FAQ section which holds answers to popular technical questions. (www.firelite.com/support/faqs.html)
- A customer callback service for when a call from Technical Service is required at a particular time.

Plus ~ Additional FREE tools to support your business

- Our free webinars and class room training on basic fire alarm technology and Fire-Lite Alarms products for industry professionals
<http://firelite.com/training.html>
- Make programming Fire-Lite Alarms panels even easier by using PS Tools!
<http://www.firelite.com/support/software.html>
- Have you used our Lite-Configurator tool? It allows you to configure a bill of materials for any Fire-Lite Alarms job.
<http://firelite.com/support/liteconfig.html>
- To help you create customer fire alarm specifications for Fire-Lite Alarms panels we also offer a tool called Lite-Specs

<http://firelite.com/support/litespecs.html>

- You might also want to simplify your life by checking out Lite-Calcs, which can be used to determine the control panel's power supply needs under various conditions and determines the size of the secondary power source needed to sustain the control panel under loss of primary (AC) power.

<http://firelite.com/support/litecalcs.html>

Tell us what you would like to see added or improved on our products by visiting our website. <https://www.honeywellfire.com/cgi-bin/forms/forms.cgi?form=18>

If you need assistance after 7p.m. EST or on the weekends please visit our Fire-Lite Alarms website **F**requency **A**sk **Q**uestions section

<http://www.firelite.com/support/faqs.html>

Thank you again for the opportunity to support your business.

Sincerely,

Fire-Lite Alarms

This email was sent to: pamela.frost@honeywell.com

This email was sent by: Honeywell ACS
1985 Douglas Drive Golden Valley, MN 55432 USA

We respect your right to privacy - [view our policy](#)

[Manage Subscriptions](#) | [Update Profile](#) | [One-Click Unsubscribe](#)