

IPDACT-CONFIGURATOR Application

Setup Instructions IPDACT Dm 379-lv2

1. Installation Requirements

1.1. PC

- Pentium III processor or higher.
- Minimum RAM memory: 128 Mbytes.
- Operating system: Windows XP™, Windows 2000™.
- Free hard disk space: 30 Mbytes.
- Minimum screen resolution: 800x600, 256 colors.
- Ethernet 10/100BT network card.

1.2. IPDACT, IPDACT-2 or IPDACT-2UD

The IPDACT-Configurator application is compatible with:

IPDACT versions 4 and 5 or above.

IPDACT-2 version 5 or above.

IPDACT-2UD version 5 or above.

The IPDACT versions 4.1 and 5.0 and above can be identified via the sticker as shown in the following figure.

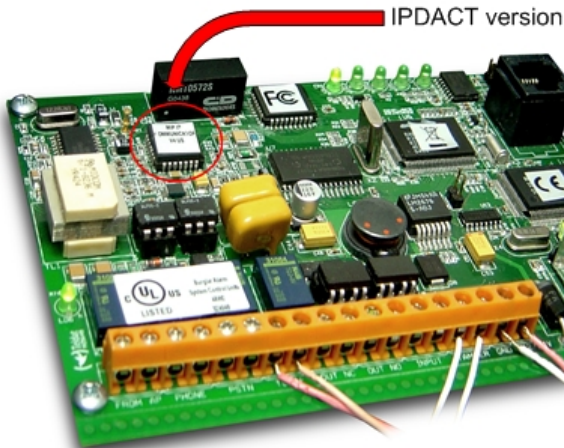


Fig. 1

2. Installing the application

Place the installation CD into the PC's CD reader. This disk starts up automatically. Subsequently, once you have inserted the CD, the following window will appear on your PC screen.



Fig. 2

Select the "Install the tool" option to begin the installation. The first screen to appear is the welcome screen which recommends you close all programs before starting the installation process. This is to prevent conflicts with files that are in execution when copying files from the installation CD to the hard disk.

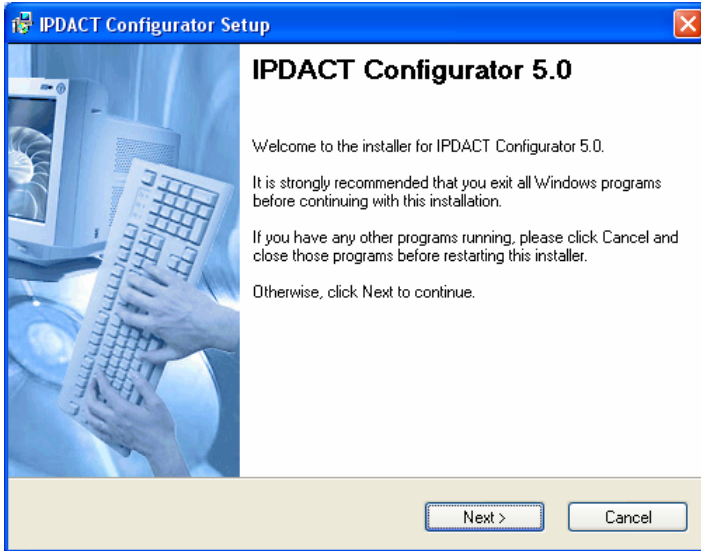


Fig. 3

Click on 'Next' to continue installation. The next screen permits you to select the hard disk file to install the IPDACT-Configurator application. The installation program shows a default file. Should you not want to use this, you can select a different file to install the application using the 'Change' button.

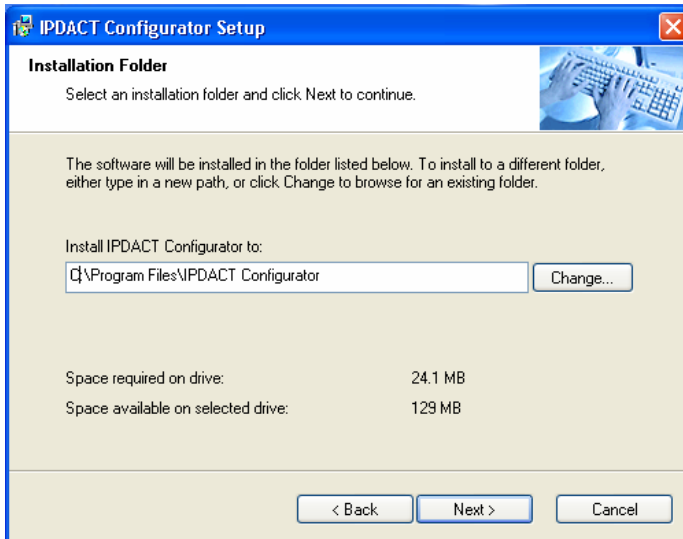


Fig. 4

Press 'Next' to continue installation. The subsequent window shows the application shortcut default name: 'IPDACT Configurator'.

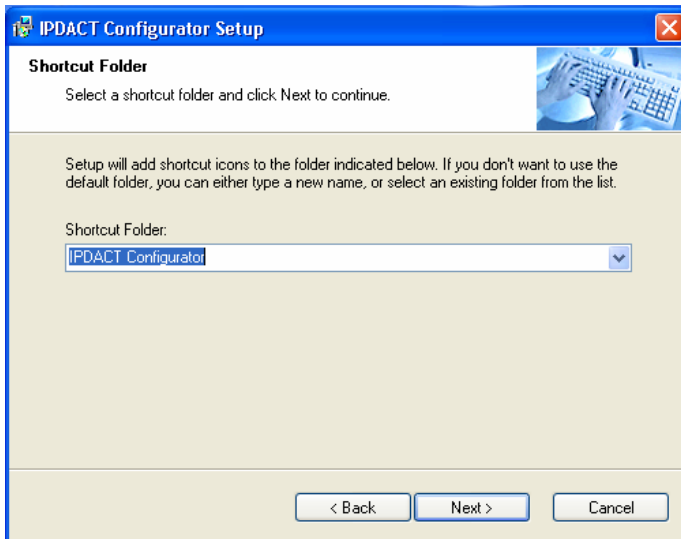


Fig. 5

Access the application through the Windows™ Start up menu: "All programs\IPDACT Configurator\IPDACT Configurator".

The next window displays a summary on the previously selected options before carrying out the actual installation.

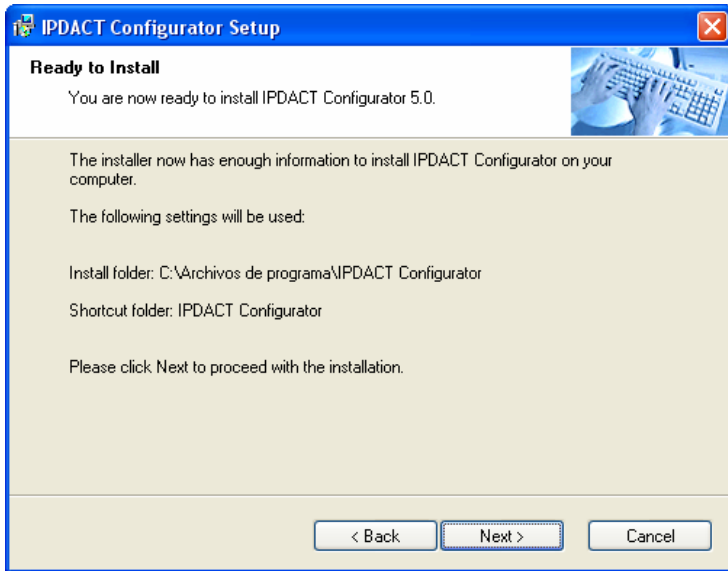


Fig. 6

If you wish to change any of the options, just click on the 'Back' button until you find the window containing the option you wish to change. The 'Next' button initiates the installation process for the files in the selected file.

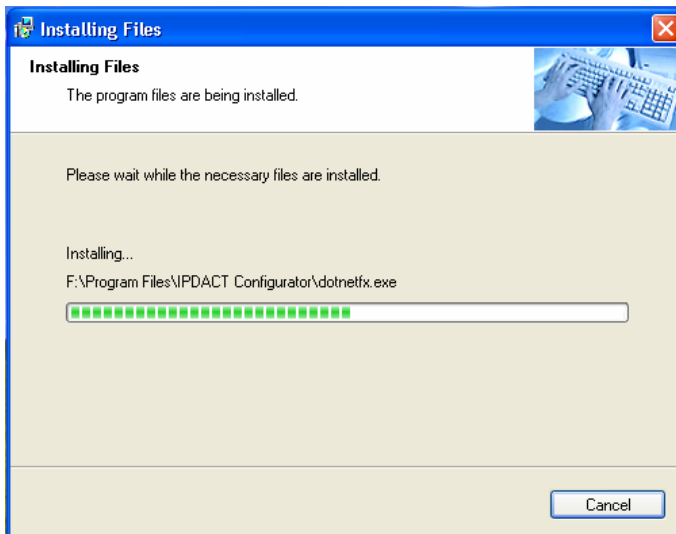


Fig. 7

Once the files have been copied, a window appears indicating the installation has been successfully completed.

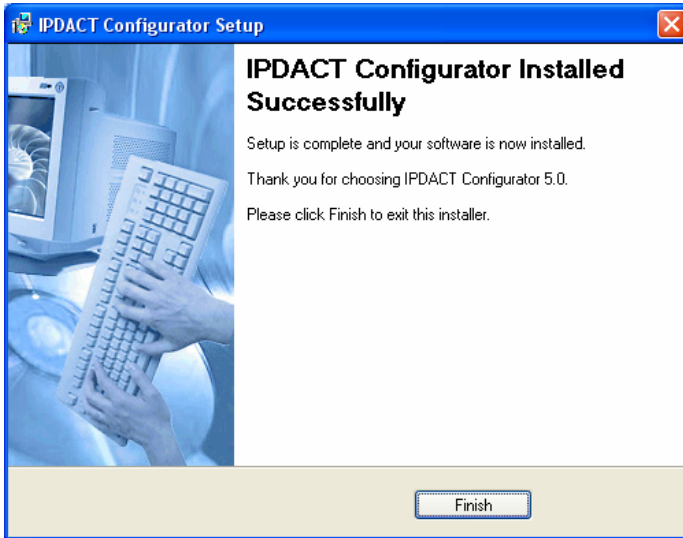


Fig. 8

3. Connection between PC and IPDACT

Once the IPDACT-Configurator has been correctly installed, you need to check that connection between the PC and the IPDACT can be carried out. The steps to execute are as follows:

STEP 1

Check that both the IPDACT and the PC are connected to the same Ethernet.

STEP 2

Check that the IPDACT has detected the Ethernet when the Ethernet connector LEDs light up. Likewise, check that the Windows™ in the PC indicates the status of the local area network connection is connected.

STEP 3

If the PC is connected to the IPDACT through a crossover Ethernet cable then you must configure a static IP address, which is on the same network as the IPDACT, in the PC. In any other case, go to STEP 5.

If the IPDACT is configured with factory settings the IP address for the IPDACT is 192.168.0.100 with mask 255.255.255.0. Configure the PC network interface with an address pertaining to the IPDACT subnet which does not have any other network device, i.e. any address 192.168.0.X with mask 255.255.255.0, where X is a value between 1 and 254 with the exception of value 100 which is assigned to the IPDACT.

The procedure to configure the IP interface in a Windows XP™ is as follows:

1. Access Start\Control Panel\Network Connections in the PC.
2. With the right hand mouse button, select Explorer. Select 'Local Area Connection'. With the right hand button, select 'Properties'.
3. The configuration screen that appears is as follows:

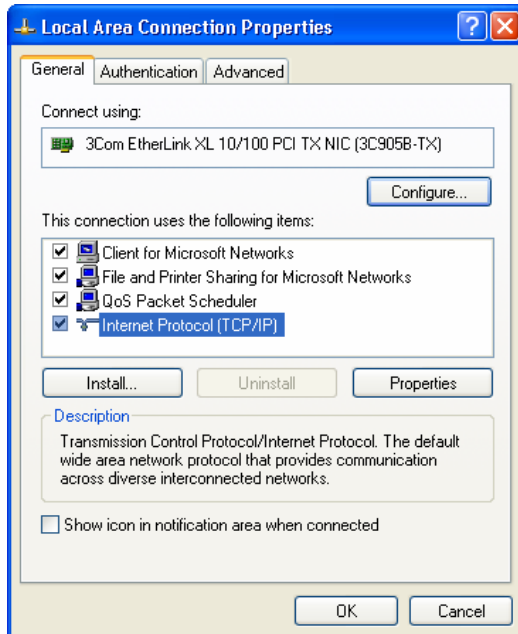


Fig. 9

4. Using the mouse, double click on 'Internet Protocol (TCP/IP)' and a window appears where you can enter the IP address, mask and Default Gateway:

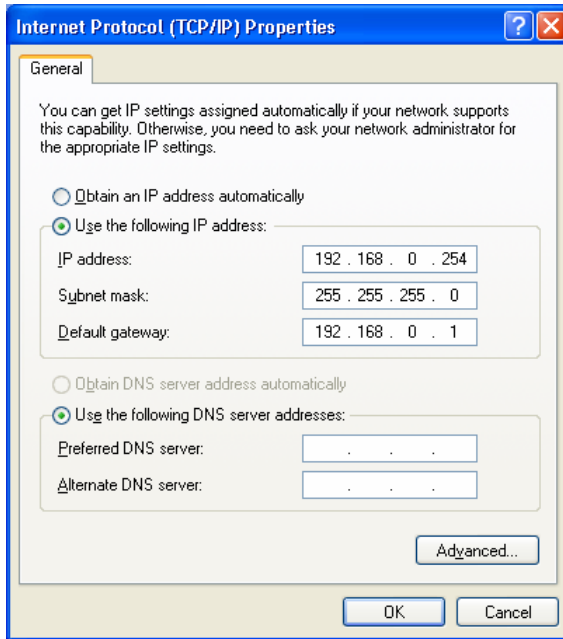


Fig. 10

5. To save the configuration changes, select the 'OK' button on each of the windows.
6. The changes are dynamic; consequently you do not need to reboot the PC.

If the IPDACT has already been configured you need to know the IPDACT IP address and carry out the actions indicated in the previous point to configure the PC with an IP address on the IPDACT network.

STEP 4

The next step is to check the IP connectivity between the PC and the IPDACT.

Execute the PING command from the PC to the IPDACT.

The following window displays the correct operating situation for the PING. This indicates there is IP connectivity from the PC to the IPDACT.


```
C:\WINDOWS\system32\CMD.exe
Microsoft Windows XP [Versión 5.1.2600]
(C) Copyright 1985-2001 Microsoft Corp.

C:\Documents and Settings\JRODRIGO>ping 192.168.0.100

Haciendo ping a 192.168.0.100 con 32 bytes de datos:

Respuesta desde 192.168.0.100: bytes=32 tiempo<1m TTL=128
Respuesta desde 192.168.0.100: bytes=32 tiempo<1m TTL=128
Respuesta desde 192.168.0.100: bytes=32 tiempo<1m TTL=128
Respuesta desde 192.168.0.100: bytes=32 tiempo<1m TTL=128

Estadísticas de ping para 192.168.0.100:
    Paquetes: enviados = 4, recibidos = 4, perdidos = 0
    (0% perdidos)
    Tiempos aproximados de ida y vuelta en milisegundos:
        Mínimo = 0ms, Máximo = 0ms, Media = 0ms

C:\Documents and Settings\JRODRIGO>_
```

Fig. 11

The following window is shown should the PING command fail. Consequently, it will be necessary to recheck the IP configuration for both the IPDACT and the PC.

```
C:\WINDOWS\system32\CMD.exe
Microsoft Windows XP [Versión 5.1.2600]
(C) Copyright 1985-2001 Microsoft Corp.

C:\Documents and Settings\JRODRIGO>ping 192.168.0.100

Haciendo ping a 192.168.0.100 con 32 bytes de datos:

Tiempo de espera agotado para esta solicitud.
Tiempo de espera agotado para esta solicitud.
Tiempo de espera agotado para esta solicitud.
Tiempo de espera agotado para esta solicitud.

Estadísticas de ping para 192.168.0.100:
    Paquetes: enviados = 4, recibidos = 0, perdidos = 4
    (100% perdidos).

C:\Documents and Settings\JRODRIGO>_
```

Fig. 12

STEP 5

If both the IPDACT and the PC are connected to a hub or switch on the LAN, the configuration for the PC's IP address depends on whether there is a DHCP server on the Local Area Network.

If there is a DHCP Server, you must configure the PC to obtain an IP address from the Server. Please follow the following steps:

1. Access Start\Control Panel\Network Connections in the PC.
2. With the right hand mouse button, select Explorer. Select 'Local Area Connection'. With the right hand button, select 'Properties'.
3. Click on 'Internet Protocol (TCP/IP)'
4. Select the option "Obtain an IP address automatically".

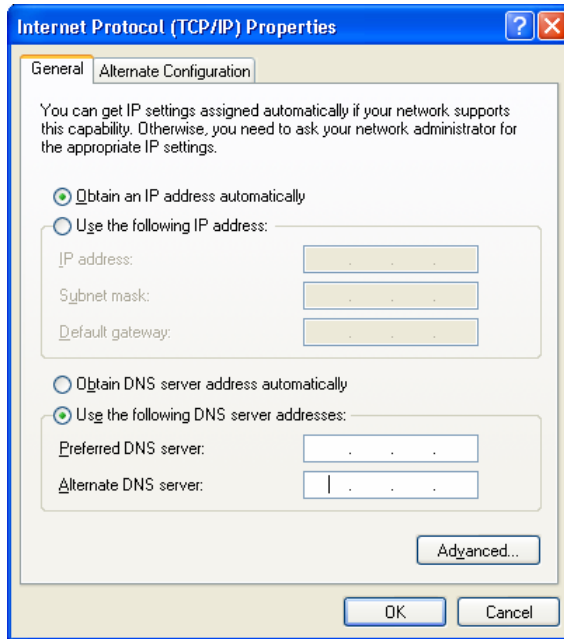


Fig. 13

5. To save the configuration changes, select the 'OK' button on each of the windows.
6. The changes are dynamic; consequently you do not need to reboot the PC.

If you don't have a DHCP server, then you need to find out the IPDACT IP address and execute the steps indicated in SETP 3 to configure the PC with a static IP address which is on the IPDACT network.