

# ECC-RTZM

## Remote Telephone Zone Module



### Emergency Communications

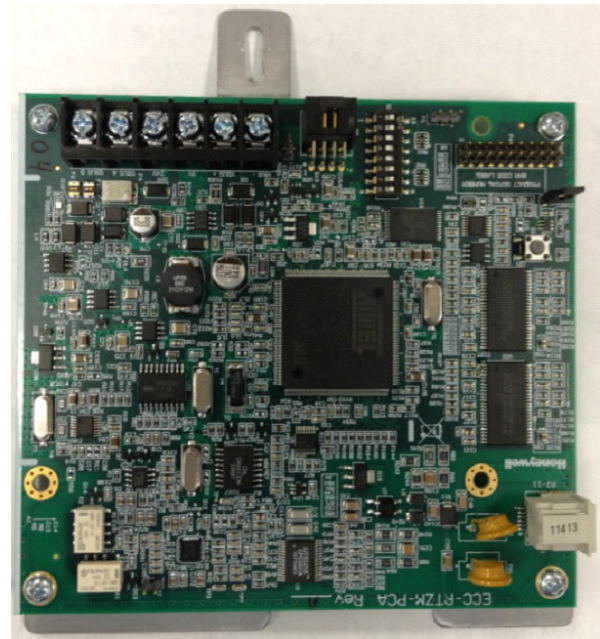
#### General

The ECC-RTZM is a Remote Telephone Zone Module that allows for secure access to the ECC-50/100(E) Emergency Command Center via cell phone or a remote telephone means. Authorized personnel can broadcast live or prerecorded messages over selected speaker zone(s) on the ECC-50/100(E) by calling into the ECC-RTZM and initiating events.

The ECC-RTZM adds another level of accessibility to the ECC-50/100(E) for triggering mass notification events for non UL listed applications. In the event of an emergency, a trained user would have the ability to dial into the ECC-RTZM remotely to initiate prerecorded messages or perform a live page by using touch tone based activation through DTMF (Dual-tone multi-frequency.) For an added level of security, the ECC-RTZM provides password based authentication so that only users who are issued a four digit password can be granted access to the system.

For faster pre-approved access, Seamless Caller-ID based authentication will allow up to five telephones to be any pre-configured for immediate paging without password authentication required.

The ECC-RTZM easily mounts in the ECC-50/100(E) cabinet behind the batteries and plugs into a J9 connector on the main control board. Use of the RTZM with the ECC-50/100(E) requires the approval of local authority having jurisdiction. It is *not* UL 864 or UL 2572 listed.



#### Features

- Allows for secure and remote activation of the ECC-50/100(E).
- Accessible from any land line or cellular phone.
- Seamlessly mounts into the ECC-50/100 cabinet with minimal effort required.
- Web based programming for fast commissioning.
- DTMF) Touch Tone based activation and control of messages.
- Initiates message activation or live paging on the ECC-50/100(E).
- Connects to a remote telephone line on a PBX System.
- Allows for All Call or Selective Zone activation. (Up to 24 selectable zones).
- 16 Programmable Speaker Zone groups for initiating multiple speaker zones simultaneously.
- Live messaging or pre-programmed messages can be activated.
- Provides password based authentication for limited access and security.
- Seamless Caller-ID based authentication for up to five pre-configured phone numbers.
- Can be configured for English, Spanish, French and Portuguese capability during ECC-RTZM programming.

#### SOME SUITABLE APPLICATIONS

- Schools
- Dormitories
- Factories
- Theaters
- Military facilities
- Restaurants
- Auditoriums
- Places of Worship
- Office Buildings

#### Installation

The ECC-RTZM mounts inside of the ECC-50/100(E) cabinet. See product installation document PN LS10034-000FL-E for details on installation and setup.

#### Compatibility

The ECC-RTZM is compatible with the ECC-50/100 and the ECC-50/100(E) Emergency Voice Evacuation system.

#### Electrical Specifications

- Standby current draw: 0.055 amps.
- Alarm current draw: 0.060 amps.

*Refer to the ECC-50/100(E) manual for the complete system current draw table.*

#### Agency Listings and Approvals

The listings and approvals below apply to the basic ECC-RTZM. In some cases, certain modules may not be listed by certain approval agencies or listing may be in process. Consult factory for latest listing status.

- No agency listings

## Temperature and Humidity ranges

This system meets NFPA requirements for operation at 0-49° C/32-120° F and at a relative humidity 93% ± 2% RH (non-condensing) at 32°C ± 2°C (90°F ± 3°F). However, the useful life of the system's standby batteries and the electronic components may be adversely affected by extreme temperature ranges and humidity. Therefore, it is recommended that this system and its peripherals be installed in an environment with a normal room temperature of 15-27° C/60-80° F.

## Wiring Requirements

See Product Installation Document part number: LS10034-000FL-E for detailed wiring requirements.

## ECC-RTZM Dimensions

5.625" X 6.312".

## Shipping Specifications

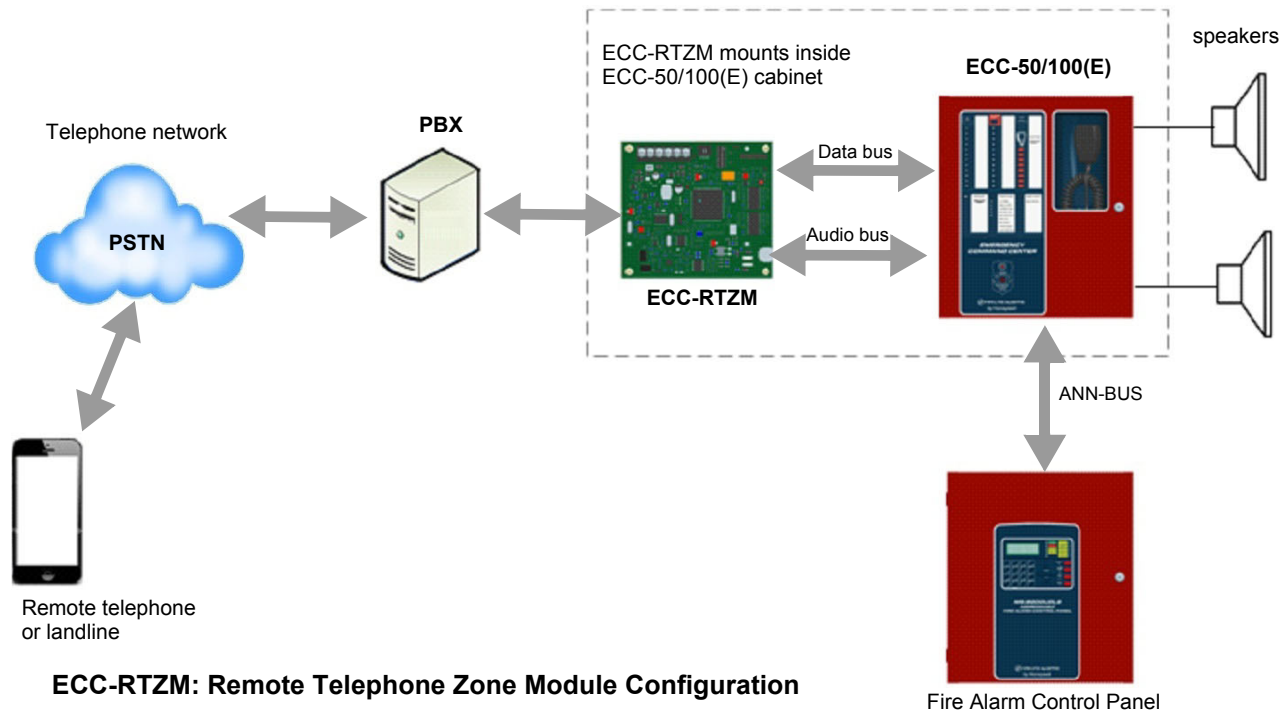
ECC-RTZM Weight: 0.61 lbs (.276kg).

## Product Line Information

**ECC-RTZM:** Remote Telephone Zone Module.

**ECC-50/100:** (Primary operating Console) 50 Watt, 25VRMS single speaker zone emergency voice evacuation system. Integral microphone, built in tone generator and 14 recordable messages.

**ECC-50/100E:** Export version (Primary operating Console) 50 Watt, 25VRMS single speaker zone emergency voice evacuation system, Integral microphone, built in tone generator and 14 recordable messages.



**ECC-RTZM: Remote Telephone Zone Module Configuration**

Fire-Lite® Alarms is a registered trademark of Honeywell International Inc. ©2015 by Honeywell International Inc. All rights reserved. Unauthorized use of this document is strictly prohibited.



This document is not intended to be used for installation purposes.  
We try to keep our product information up-to-date and accurate.  
We cannot cover all specific applications or anticipate all requirements.  
All specifications are subject to change without notice.



Assembled in the USA

For more information, contact Fire-Lite Alarms. Phone: (800) 627-3473, FAX: (877) 699-4105.  
[www.firelite.com](http://www.firelite.com)