



July 6, 1998

H-450

PK-5210UD

Remote Upload/Download Programming Software for the MS-5210UD

Section: Software

GENERAL

The Fire•Lite PK-5210UD Remote Upload/Download Software is a versatile utility program. An extensive list of powerful features permits remote programming, functional control options and status interrogation of the MS-5210UD fire alarm control panel over standard public telephone lines. All upload and download functions are performed without affecting the fire protection at the protected premises. The PK-5210UD can be used with most IBM® AT® or compatible computers, including laptops, equipped with a Hayes compatible modem.

FEATURES

- User-friendly help screens for each function.
- Password protection of four separate user levels.
- Modem option selection screen.
- Operator Identification screen allows creation of operator information database (search feature provided).
- Customer Setup screen allows configuration using customer information with storage into separate retrievable files.
- Download File utility creates FACP program files. Allows for master file creation and retention of factory default settings.
- Upload File utility for retrieving stored FACP program files.
- Upload/Download Activation screen provides simple interactive messages during communications to FACP.
- Upload/Download file comparison.
- Print options for printing upload, download or customer files.
- **Execute control panel functions such as:**
 - ✓ Trouble Silence
 - ✓ Manual Evacuate
 - ✓ Restore Evacuate
 - ✓ Zone Enable/Disable
 - ✓ NAC Enable/Disable
- **Retrieve information from control panel:**
 - ✓ Complete panel program.
 - ✓ Individual programming sections (1-4).
 - ✓ History File only (256 events).
 - ✓ Walktest File only (256 events).
 - ✓ Troubleshoot voltages (AC, battery, zones, NACs, 24 V) only in continuous real time or "snapshot."
 - ✓ Current panel status only (real time or "snapshot").
 - ✓ Time and Date only ("snapshot").
- **Security features:**
 - ✓ Secret Code
 - ✓ Time-out at control panel
 - ✓ Callback capability
 - ✓ Panel Identification Number
 - ✓ Error Checking



- ✓ Central Station Acknowledge
- ✓ Central Station Data Protection

COMPUTER REQUIREMENTS

- An IBM or compatible computer, a 386 (minimum) micro-processor (486DX or greater is recommended), and a minimum of 8 megabytes of onboard RAM. The program must be run from a hard drive and requires a minimum of 5 megabytes of available hard drive space.
- A VGA (minimum) monitor with a resolution of 640 x 480 @ 256 colors (minimum) is required for adequate display of the program screens.
- An IBM compatible mouse or track ball is recommended to run the program.
- A printer is not required for operation of the program, but is required for printing a hard copy of program files.
- Microsoft® Windows® 3.1 or higher must be installed to run the program. PK-5210UD was developed in the Windows 95 environment and runs best on a computer running Windows 95.

MODEM COMMUNICATION

- Direct connect internal or external modem.
- Configure Communication screen allows selection of modem and computer port. Options exist to customize initialization parameters for virtually any modem.
- 1200 baud transmission speed.
- **Modem selections such as:**
 - ✓ Hayes Accura 14400 & 28800
 - ✓ Cardinal 14400 & 28800
 - ✓ Zoom 14400 Data/Fax

Refer to PK-5210UD Software Manual, Document # 50363, for additional information.

Fire•Lite® is a registered trademark of Fire•Lite Alarms, Inc. Microsoft®, Windows®, MS® and MS-DOS® are registered trademarks of Microsoft Corporation. IBM® and AT® are registered trademarks of International Business Machines, Inc.

This document is not intended to be used for installation purposes. We try to keep our product information up-to-date and accurate. We cannot cover all specific applications or anticipate all requirements. All specifications are subject to change without notice. For more information, contact Fire•Lite. Phone: (203) 484-7161 FAX: (203) 484-7118



12 Clintonville Road, Northford, Connecticut 06472

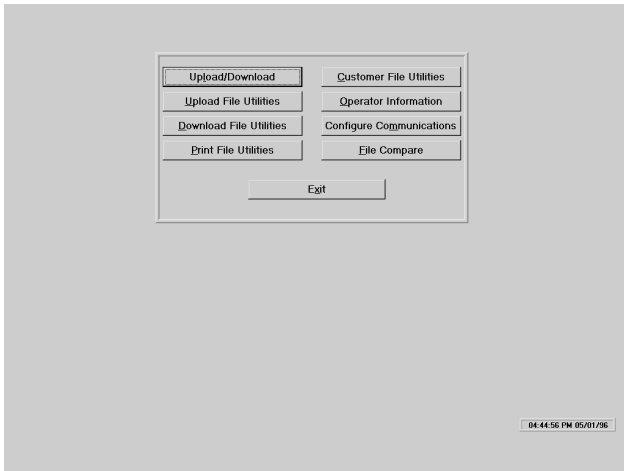
ISO-9001
Engineering and Manufacturing
Quality System Certified to
International Standard ISO-9001



Made in the U.S.A.

MENU DRIVEN SCREENS

Beginning with the installation screens and continuing with the operating screens, menus provide guidance and options to the operator. The primary options available in the PK-5210UD program are selected from the Main Menu, shown below.



Main Menu Screen

ON-LINE HELP

If a question about a screen arises at any time, the on-line help feature may be accessed by highlighting the desired topic and pressing the F1 key.



Typical Help Screen

UPLOAD/DOWNLOAD

The Upload/Download screen provides the features which allow the transfer of data between the service terminal and the FACP. The Upload option allows the operator to retrieve the following data from the FACP:

- ✓ Complete FACP program.
- ✓ Individual programming sections (1-4).
- ✓ History File only.
- ✓ Walktest File only.
- ✓ Troubleshoot Voltages only (real time or "snapshot").
- ✓ Current System Status only (real time or "snapshot").
- ✓ FACP Time and Date only ("snapshot").

The Download option allows the operator to transmit the following data to the FACP:

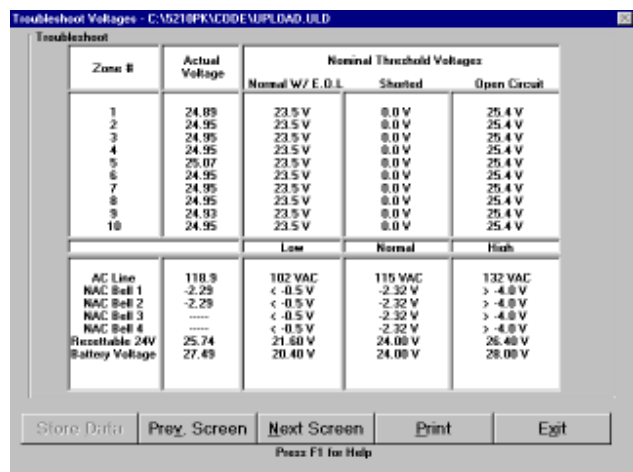
- ✓ Complete FACP program.
- ✓ Individual programming sections (1-4).
- ✓ New Time and Date only.
- ✓ Trouble Silence Command only.
- ✓ Manual Evacuate Command only.
- ✓ Restore (Clear) Manual Evacuate Command only.
- ✓ Enable or Disable Zones only.
- ✓ Enable or Disable NACs only.
- ✓ Clear History File only.
- ✓ Clear Walktest File only.
- ✓ Change Secret Code only.



Upload/Download Activation Screen

TROUBLESHOOT VOLTAGES

Read and display system voltages using remote troubleshooting feature. Voltages are shown in the following screen.



Troubleshoot Screen

ORDERING INFORMATION

The PK-5210UD Kit includes three 3-1/2" floppy disks and user manual.