



Fire·LITE® Alarms

www.firelite.com

September 11, 2001

DF-52239 H-200

PK-9600UD

Off-Line Programming & Test Utility for the MS-9600

Section: Software

GENERAL

The **Fire·Lite PK-9600UD** is a versatile, Windows®-based, off-line programming and test utility for the **MS-9600 636-Point, Addressable FACP (Fire Alarm Control Panel)**. Using the PK-9600UD's logical sequence of "point and click" menu selections, a fire alarm system designer/specifier can create an entire program for the MS-9600 in the comfort of the office, check it for common errors, store it, then bring it to the job site for downloading into the control panel. This can greatly reduce installation programming time, increase confidence in the site-specific software and eliminate common programming errors.

The powerful PK-9600UD includes error checks for common programming mistakes, such as an input point that does not activate any outputs, or an output point that is not linked to any inputs. It also includes a simulation option that lists all of the output points activated by a particular input point, or alternately, lists all the input points that are linked to a particular output. Although the error checks and simulation option do not eliminate on-site testing, they greatly increase the confidence in the final installation.

Additionally, the PK-9600UD includes a compare routine that can significantly reduce reacceptance testing. When a new program is created, it may be compared with a previous version with the differences highlighted in the display. If the panel programming is modified from the internal keypad, it may be uploaded into the PK-9600UD and compared with a previous version stored on disk. This identification of program differences significantly assists the installer in testing the installation per NFPA requirements. NFPA 72 — National Fire Alarm Code states that reacceptance testing of a fire alarm system shall be performed on 100% of all points that are "known" to be modified. The PK-9600UD allows the installer to easily identify the exact points that are changed.

PK-9600UD FEATURES

The PK-9600UD allows system designers/specifiers to:

- Store operator information in a database through the Operator Identification Utility.
- Provide four separate authority levels through Password protection.
- Utilize the Download File Utility to create a Master Default Download Program or modify existing programs.
- Examine retrieved panel programs through the Upload File Utility.
- Efficiently attach nouns and adjectives to all 636 addressable points of the MS-9600.
- Sort programming data in a tabular setup screen by device address, type, function or zone.
- Compare separate upload/download files location by location through use of the File Comparison Utility.



9600_main_screen.tif

Main Menu Screen

- View a graphic representation of all installed devices (up to 636).
- Utilize the Simulate feature to display correlation of inputs to outputs.
- Select Verification of program prior to downloading to identify programming errors.
- Save, display and print upload/download file information.

COMPUTER REQUIREMENTS

- An IBM® or compatible computer, a Pentium 90 (minimum) microprocessor (Pentium 133 or greater is recommended), and a minimum of 9 megabytes of onboard RAM available. The program must be run from a hard drive and requires a minimum of 4 megabytes of available hard drive space.
- A VGA (minimum) monitor with a resolution of 800 x 600 @ High Color or True Color (minimum) is required for adequate display of the program screens. The display should be set to small fonts.
- An IBM compatible mouse or track ball should be used to run the program. The program may also be run from a standard 101-key keyboard, although certain features may not be accessible.
- A printer is not required for operation of the program, but is required for printing a hard copy of upload/download files.
- Microsoft® Windows® 95 or higher must be installed to run the program. PK-9600UD was developed in the Windows 95 environment and runs best on a computer running Windows 95.

ON-LINE HELP

A comprehensive on-line help feature is accessible from within each screen by pressing F1.

ORDERING INFORMATION

The PK-9600UD includes a CD and installation sheet.

This document is not intended to be used for installation purposes. We try to keep our product information up-to-date and accurate. We cannot cover all specific applications or anticipate all requirements. All specifications are subject to change without notice. For more information, contact Fire·Lite Alarms, One Fire-Lite Place, Northford, Connecticut 06472. Phone: (800) 627-3473, Toll Free FAX: (877) 699-4105, FAX Back:(888) 388-3299.



Made in the U.S.A.

MENU-DRIVEN SCREENS

Beginning with the installation screens and continuing with the operating screens, menus provide guidance and options to the operator. The primary options available in the PK-9600UD program are selected from the Main Menu, shown on page 1. Clicking a Main Menu option displays the operating screen for the selected option. Examples of just a few system options are shown below.

Main System Functions Option

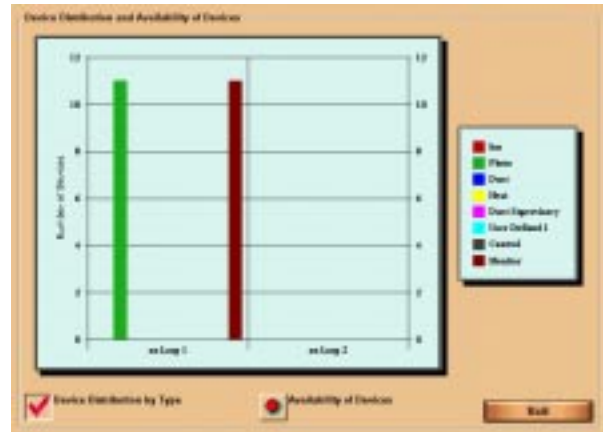
The Main System Functions screen provides summary information on using the PK-9600UD program to perform key system operations.



Main System Functions Screen

Statistics Option

The Statistics screen enables you to view the distribution and availability of each type of installed device.



Statistics Screen

Compare Files Option

The Compare Files screen enables you to compare separate upload/download files location by location. Thus, a newly created program may be compared with a previous version, with the differences highlighted on the screen.



Compare Files Screen

Microsoft® and **Windows®** are registered trademarks of Microsoft Corporation. **IBM®** is a registered trademark of International Business Machines, Inc.